

Assembly Instruction

Document No. 260241	Revision A				permobil
Production state SERIES					
Preform Date 2014-02-13	Preform By TSN	Approved Date 2/14/2014	Approved By GHT	Page 1/9	

Installation of spare part kit, Seat tilt

List of parts that should be in the set.

- | | | | | | |
|----|--------|-------------------|-----|--------|-----------------------------|
| 1. | Qty. 2 | Socket | 8. | Qty. 1 | Seat tilt shaft |
| 2. | Qty. 2 | Slide washer | 9. | Qty. 2 | Squeeze guard |
| 3. | Qty. 2 | Bearing seat tilt | 10. | Qty. 2 | Wheel |
| 4. | Qty. 2 | Bush | 11. | Qty. 2 | Ball bearing (12x37x12) |
| 5. | Qty. 4 | Slide puck | 12. | Qty. 2 | Disc spring (16,3x31,5x0,8) |
| 6. | Qty. 2 | Washer, actuator | 13. | Qty. 2 | Shim washer (17x24x0,9) |
| 7. | Qty. 2 | Damper, actuator | 14. | Qty. 8 | Disc spring (10,2x20x0,9) |

Dismantle of seat tilt

Read through the instructions before starting dismantle.

1. Remove the seat tilt from the wheelchair. See service manual for detailed information.
2. Remove the rear cover from the seat tilt. See fig. 1.
3. Remove the side covers from the seat tilt. See fig. 2.

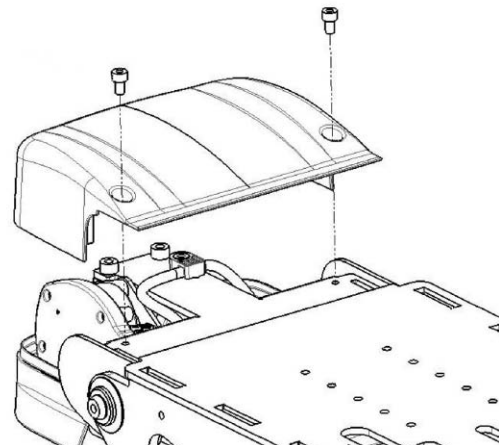


Fig. 1. Remove the rear cover from the seat tilt.

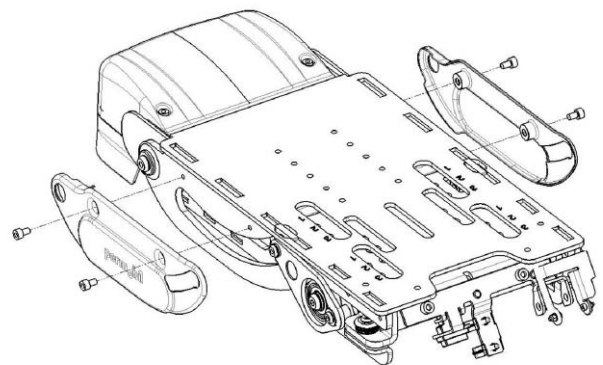


Fig. 2. Remove the side covers from the seat tilt.

Assembly Instruction

Document No. 260241	Revision A				permobil
Production state SERIES					
Preform Date 2014-02-13	Preform By TSN	Approved Date 2/14/2014	Approved By GHT	Page 2/9	

4. Remove the four screws holding the rear edge of the actuator. See fig. 3.
5. Remove the three screws holding the actuator's washers and dampers. See fig. 4.

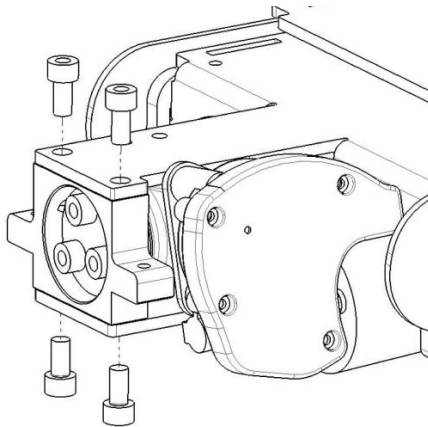


Fig. 3. Remove the four screws holding the rear edge of the actuator.

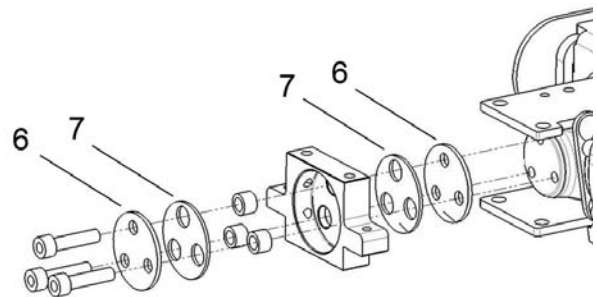


Fig. 4. Remove the three screws holding the actuator's washers and dampers.

6. Remove the actuator: Carefully connect the actuator to 24V power supply and run it out until the actuator becomes loose. **NOTE!** Make sure to run the actuator in correct direction!

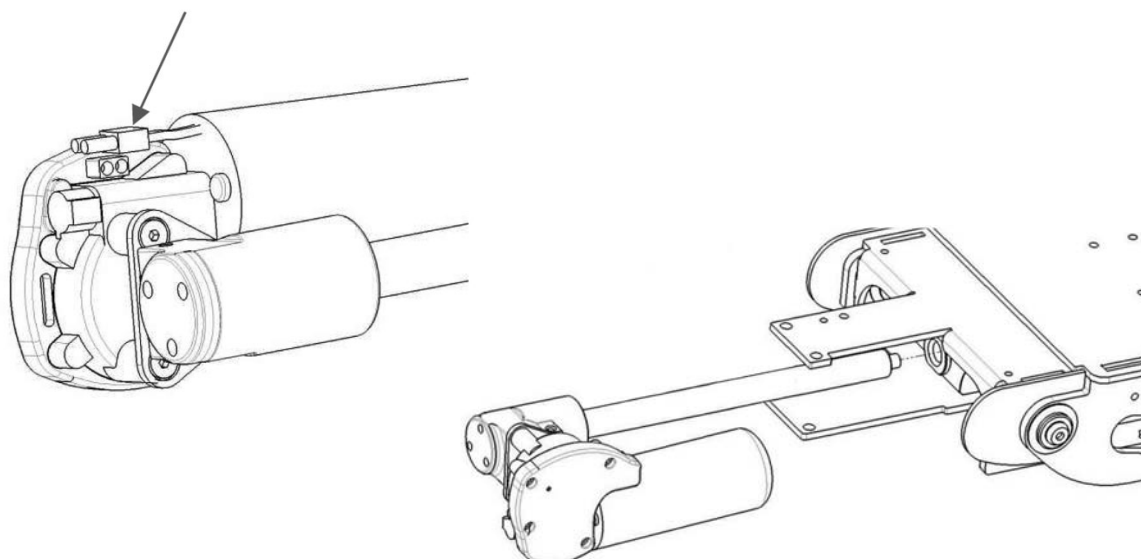


Fig. 5. Carefully connect the actuator to 24V power supply and run it out until the actuator becomes loose.

Assembly Instruction

Document No. 260241	Revision A				permobil
Production state SERIES					
Preform Date 2014-02-13	Preform By TSN	Approved Date 2/14/2014	Approved By GHT	Page 3/9	

7. Remove the screws, spring washers and nuts on the left and right hand side. See fig. 6.
NOTE! Keep the spring washers on the screw to make sure they are correct mounted later.

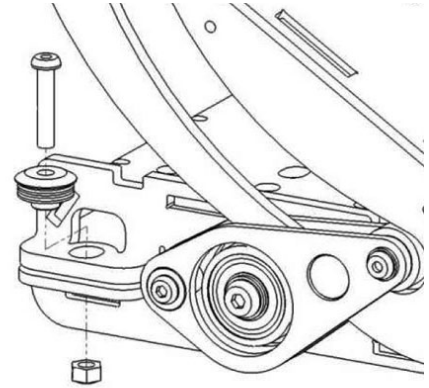


Fig. 6. Remove the screws, spring washers and nuts on the left and right hand side.

8. Remove the sockets and wheels from the seat tilt, they are mounted with two screws on the left and right hand side of the seat tilt. See fig. 7.
9. Remove the two screws holding the seat tilt shaft. See fig. 8.
10. Take the seat tilt apart. See fig. 9.

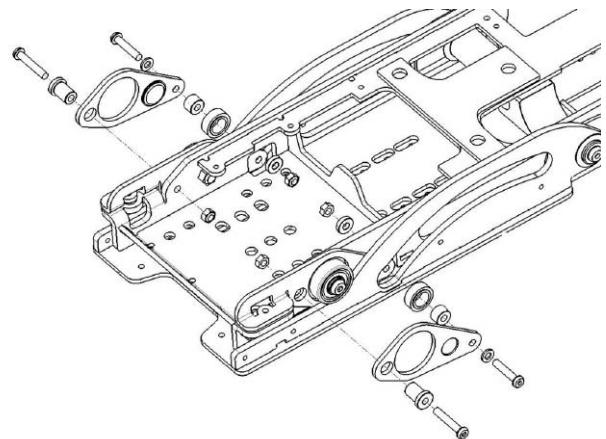


Fig. 7. Remove the sockets and wheels from the seat tilt.

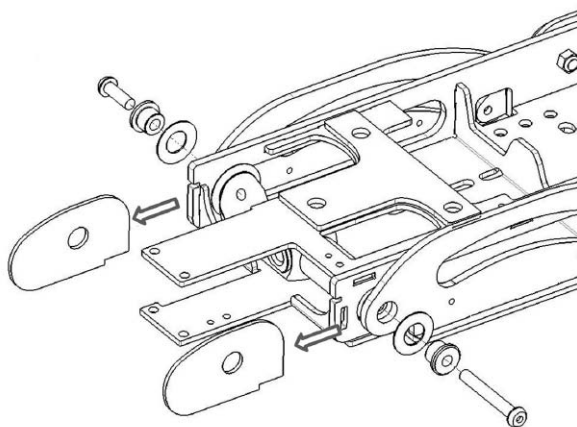


Fig. 8. Remove the two screws holding the seat tilt shaft and associated parts.

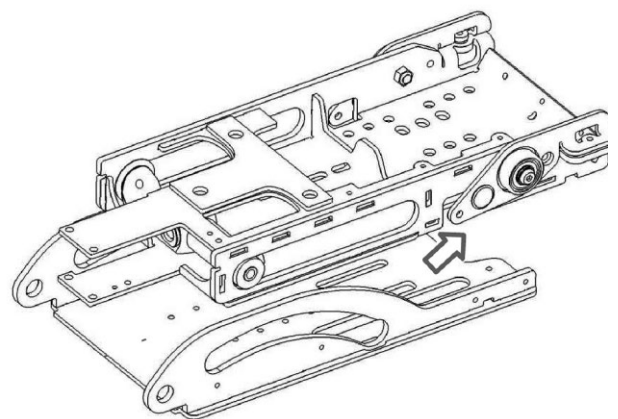


Fig. 9. Take the seat tilt apart.

Assembly Instruction

Document No. 260241	Revision A				permobil
Production state SERIES					
Preform Date 2014-02-13	Preform By TSN	Approved Date 2/14/2014	Approved By GHT	Page 4/9	

11. Remove the bearing, socket and slide washer.
See fig. 10.

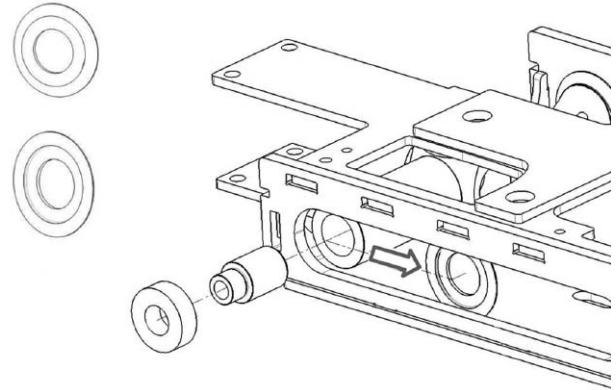


Fig. 10. Remove the bearing and slide washer

12. Remove the bearing on the opposite side. See fig. 11.

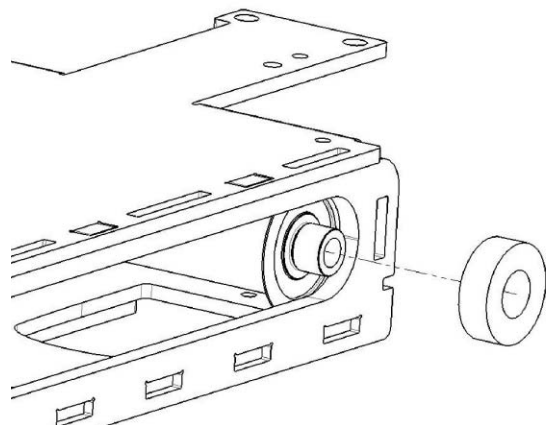


Fig. 11. Remove the bearing on the opposite side.

13. Remove the seat tilt shaft. See fig. 12.

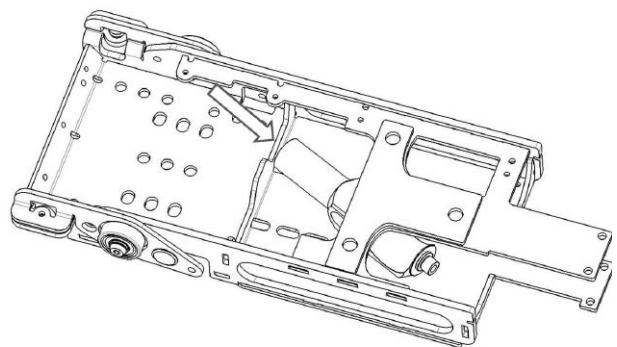


Fig. 12. Remove the seat tilt shaft.

Assembly Instruction

Document No. 260241	Revision A				permobil
Production state SERIES					
Preform Date 2014-02-13	Preform By TSN	Approved Date 2/14/2014	Approved By GHT	Page 5/9	

14. Remove the slide pucks and plates. See fig. 13.

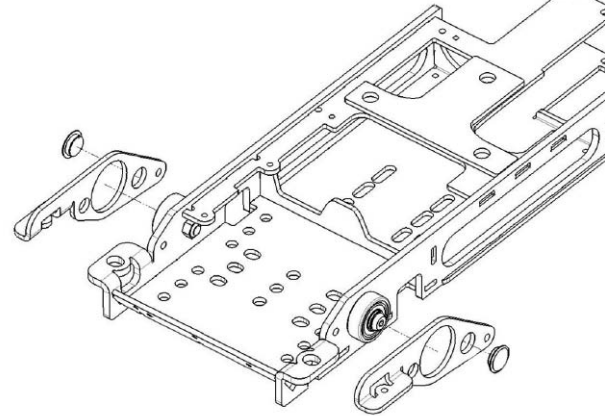


Fig. 13. Remove the slide pucks and plates.

15. Remove the bearings, they are mounted with one screw each. See fig. 14.

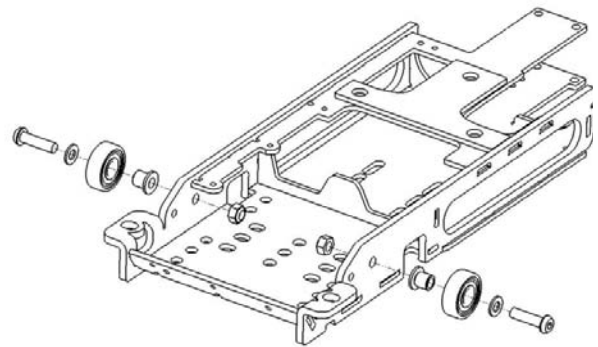


Fig. 14. Remove the bearings, they are mounted with one screw each.

Assembly Instruction

Document No. 260241	Revision A				permobil
Production state SERIES					
Preform Date 2014-02-13	Preform By TSN	Approved Date 2/14/2014	Approved By GHT	Page 6/9	

Installation

Read through the instructions before starting installation.

1. Mount the ball bearing (11). Use a torque wrench to thighten the screws. See fig. 14. **Tightening torque: 24 Nm.**
2. Lubricate the hole in the plate with grease before mounting the slide puck (5) in the hole of the plate. This will keep them in place. See fig. 15.
3. Lubricate the flat face of the puck with grease. See fig. 15.
4. Position the seat tilt shaft inside the seat tilt.
5. Lubricate the contact surfaces of the slide washer (2) with grease.

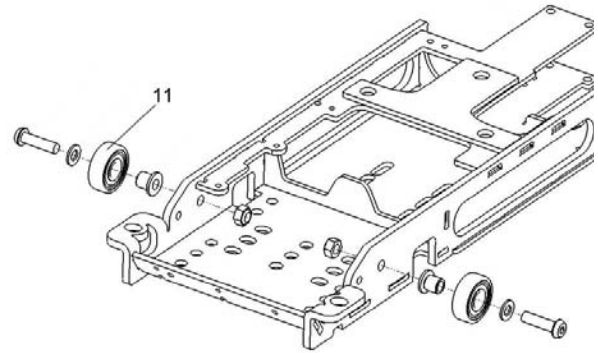


Fig. 14. Mount the ball bearing.

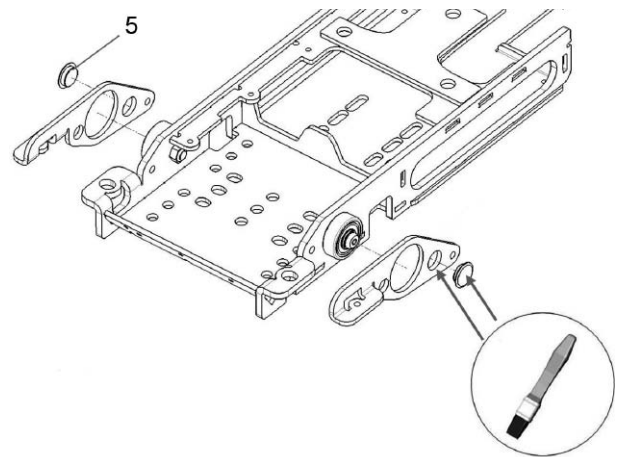


Fig. 15. Lubricate the hole in the plate with grease before mounting the slide puck.

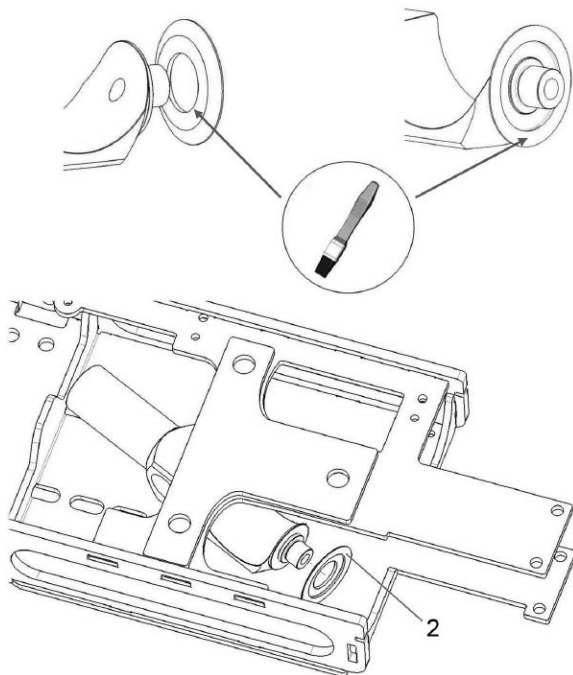


Fig. 16. Lubricate the contact surfaces of the slide washer with grease.

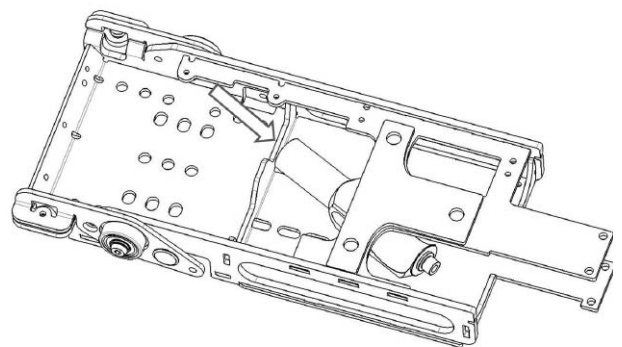


Fig. 17. Position the seat tilt shaft inside the seat tilt.

Assembly Instruction

Document No. 260241	Revision A				permobil
Production state SERIES					
Preform Date 2014-02-13	Preform By TSN	Approved Date 2/14/2014	Approved By GHT	Page 7/9	

6. Lubricate the hole of the bearing (3) with grease before mounting. See fig. 18.
7. Lubricate the contact surfaces of the slide washer (2) with grease before mounting. See fig. 19.
8. Lubricate the hole of the bearing (3) with grease before mounting. See fig. 19.
9. Position the two parts of the tilt together. See fig. 20.
10. Mount the two parts of the tilt together using the screws, bushings (4), disc springs (14) and the squeeze guards. Lubricate the inside of the bushing with grease and apply threadlock (Loctite 243) on the screws before mounting. Use a torque wrench to thighten the screws. See fig. 21. **Tightening torque: 24 Nm.**

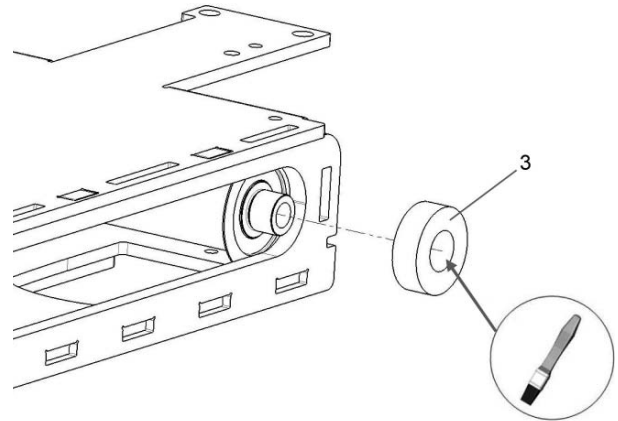


Fig. 18. Mount the bearing.

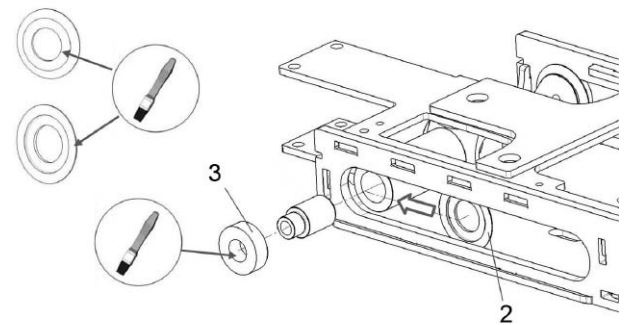


Fig. 19. Lubricate the hole in the plate with grease before mounting the slide puck.

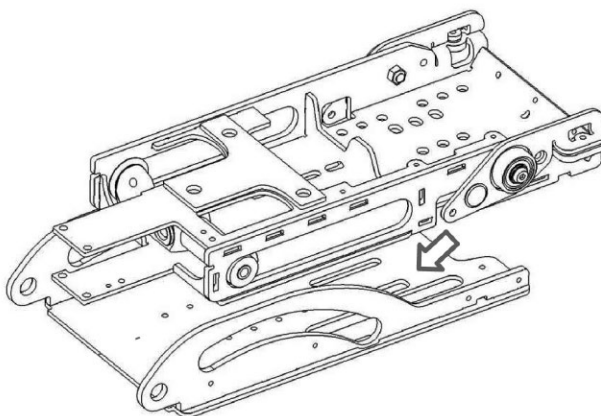


Fig. 20. Mount the two parts of the tilt together.

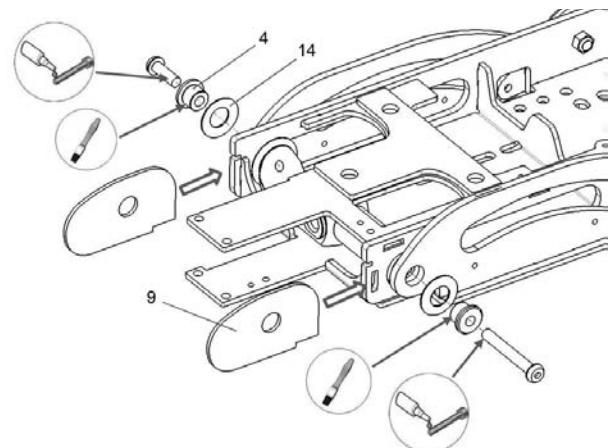


Fig. 21. Mount the two parts of the tilt together.

Assembly Instruction

Document No. 260241	Revision A				permobil
Production state SERIES					
Preform Date 2014-02-13	Preform By TSN	Approved Date 2/14/2014	Approved By GHT	Page 8/9	

11. Lubricate the hole of the plate and between the puck and the shim washer with grease, this will keep them in place. Then lubricate the flat face of the puck with grease. See fig. 22.
12. Lubricate the wheels and sockets before mounting. Mount the wheels (10), sockets (1) and the plates using the associate screws and washers. See fig. 24.
13. Mount the screws, spring washers and nuts on the left and right hand side. See fig. 26.

NOTE! Make sure to mount the spring washers the correct way. See fig. 23.

NOTE! Measure the distance between the plate and the top washer to get the correct tension. (The distance should be 6,3 mm.) See fig. 25.

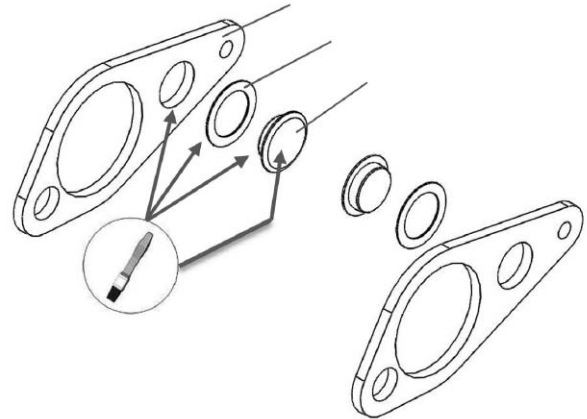


Fig. 22. Lubricate the hole of the plate and between the puck and the shim washer with grease.

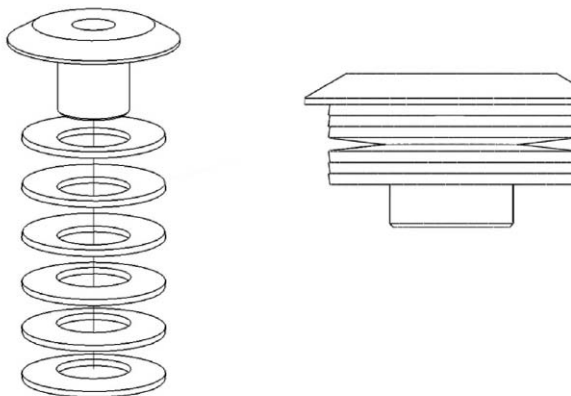


Fig. 23. Mount the ball bearing.

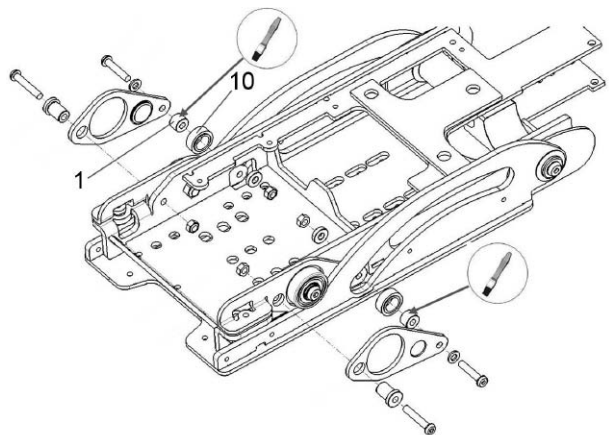


Fig. 24. Lubricate the wheels and sockets before mounting.

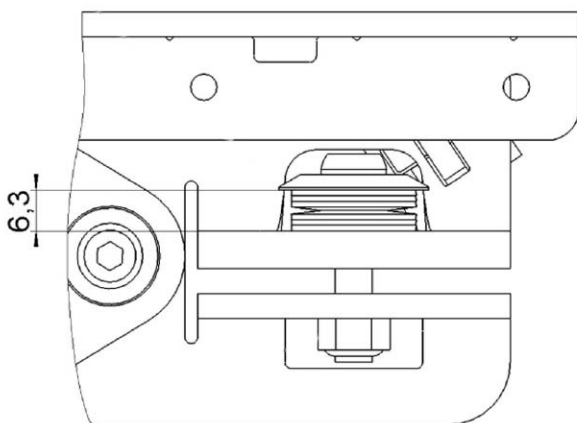


Fig. 25. Mount the ball bearing.

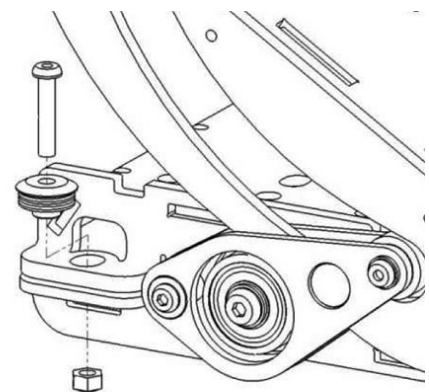


Fig. 26. Mount the screws, spring washers and nuts on the left and right hand side.

Assembly Instruction

Document No. 260241	Revision A				permobil
Production state SERIES					
Preform Date 2014-02-13	Preform By TSN	Approved Date 2/14/2014	Approved By GHT	Page 9/9	

14. Lubricate the trapezoidal thread with grease and screw the actuator in to the seat tilt shaft by rotating the actuator approx, 5 turns. Connect the actuator to a 24v power supply and run it until the rear end of the actuator is about 17-18 mm. from the edge of the plate. See fig. 29.

NOTE! Make sure to hold the actuator strait witch makes it go freely between the plates.

NOTE! Do not drive the actuator too far, the actuator electronics will collide with the plates.

15. Mount the actuator washers (6) and dampfer (7). See fig. 27.

16. Mount the four screws holding the rear edge of the actuator. See fig. 28.

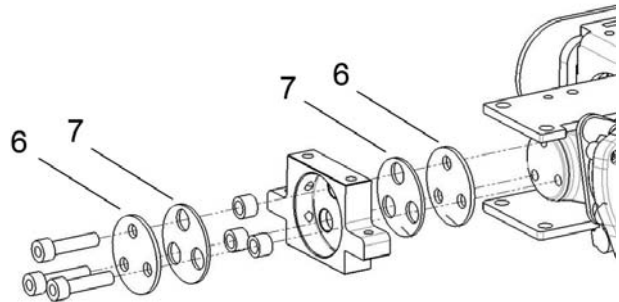


Fig. 27. Mount the actuator washers (6) and dampfer (7).

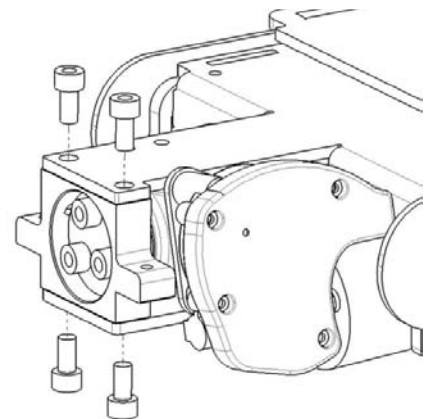


Fig. 28. Mount the four screws holding the rear edge of the actuator.

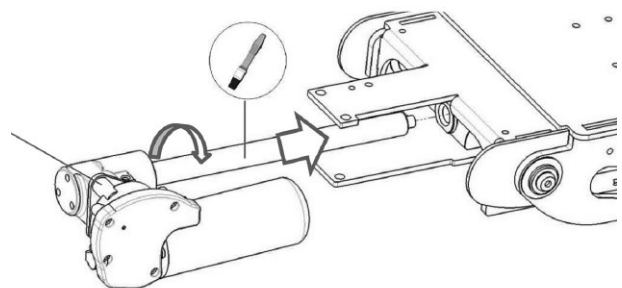
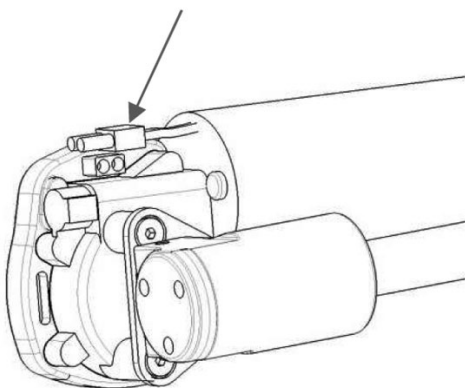


Fig. 29. Carfully connect the actuator to 24V power supply and run it in until until the rear end of the actuator is about 17-18 mm. from the edge of the plate.

Assembly Instruction

Document No. 260241	Revision A				permobil
Production state SERIES					
Preform Date 2014-02-13	Preform By TSN	Approved Date 2/14/2014	Approved By GHT	Page 1/9	

Montering av reservdelskit, Sitstilt

Delar som ska finnas med i satsen

1.	2 st.	Hylsa	8.	1 st.	Sitstilt-axel
2.	2 st.	Glidbricka	9.	2 st.	Klämskydd
3.	2 st.	Kullager	10.	2 st.	Hjul
4.	2 st.	Buskning	11.	2 st.	Kullager (12x37x12)
5.	4 st.	Glidpuck	12.	2 st.	Skivfjäder (16,3x31,5x0,8)
6.	2 st.	Bricka, ställdon	13.	2 st.	Shimsbricka (17x24x0,9)
7.	2 st.	Dämpare, ställdon	14.	8 st.	Skivfjäder (10,2x20x0,9)

Demontering av sitstilt

Läs igenom anvisningen innan modemontering påbörjas

1. Demontera sitstiltens från rullstolen. Se service-manualen för utförlig information.
2. Demontera sitstiltens bakre kåpa. Se bild 1.
3. Demontera sitstiltens sidokåpor. Se bild 2.

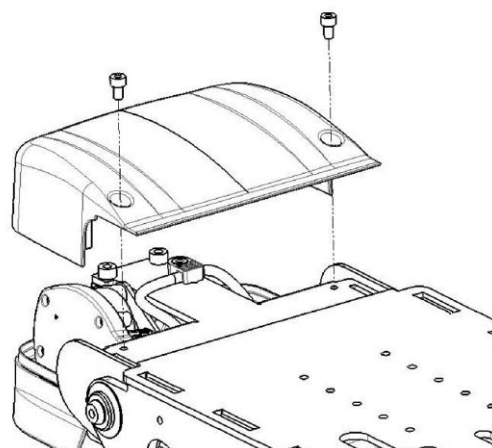


Bild 1. Demontera sitstiltens bakre kåpa.

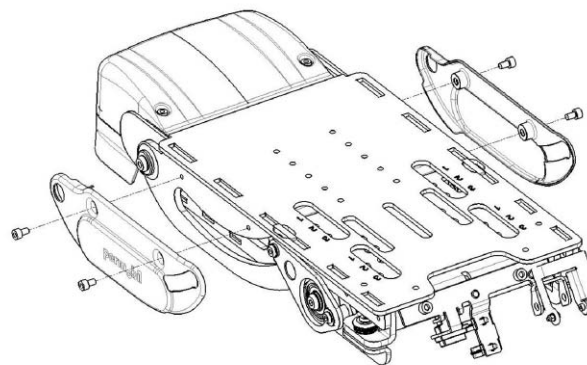


Bild 2. Demontera sitstiltens sidokåpor.

Assembly Instruction

Document No. 260241	Revision A				permobil
Production state SERIES					
Preform Date 2014-02-13	Preform By TSN	Approved Date 2/14/2014	Approved By GHT	Page 2/9	

4. Demontera de fyra skruvar som håller ställdonets bakre ände. Se bild 3.
5. Demontera de tre skruvar som håller ställdonets brickor och dämpare. Se bild 4.

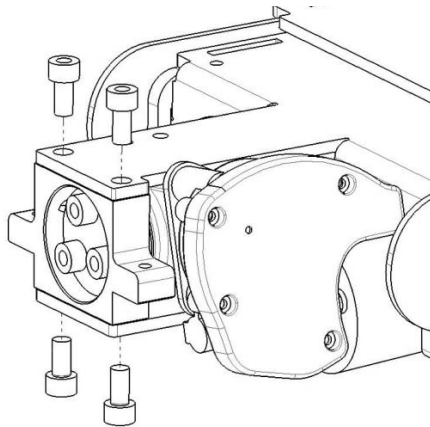


Bild 3. Demontera de fyra skruvar som håller ställdonets bakre ände.

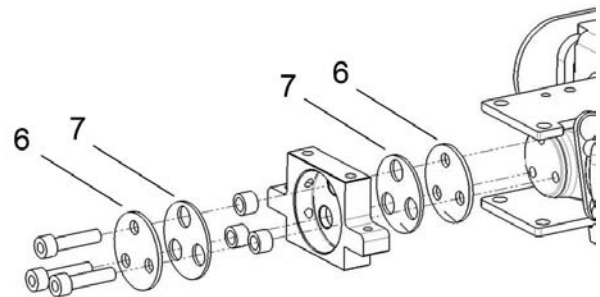


Bild 4. Demontera de tre skruvar som håller ställdonets brickor och dämpare.

6. Demontera ställdonet: Anslut försiktigt ställdonet till 24 volts strömkälla och kör ställdonet utåt till dess att ställdonet lossnar från sitstilen. **OBS!** Se till att köra ställdonet i rätt riktning!

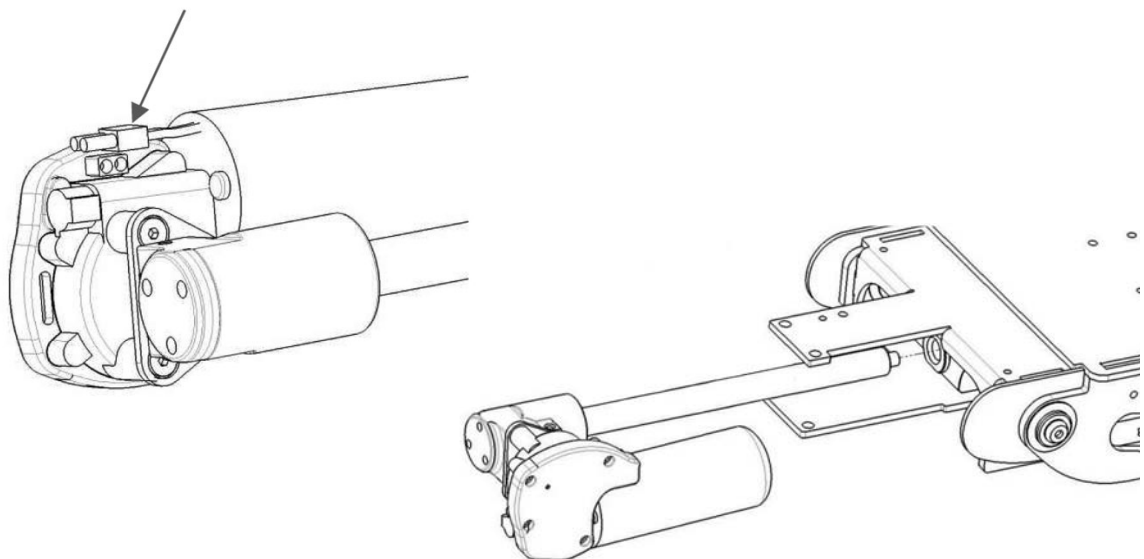


Bild 5. Anslut försiktigt ställdonet till 24 volts strömkälla och kör ställdonet utåt till dess att ställdonet lossnar från sitstilen.

Assembly Instruction

Document No. 260241	Revision A				permobil
Production state SERIES					
Preform Date 2014-02-13	Preform By TSN	Approved Date 2/14/2014	Approved By GHT	Page 3/9	

7. Demontera skruvarna, fjäderbrickorna och muttrarna på höger och vänster sida. See fig. 6.

OBS! Låt fjäderbrickorna sitta kvar på skruven för att säkerställa rätt montering senare.

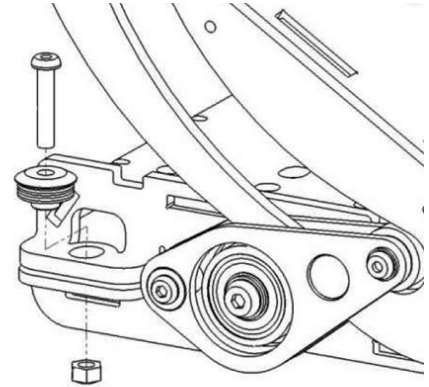


Bild 6. Demontera skruvarna, fjäderbrickorna och muttrarna på höger och vänster sida.

8. Demontera hylsorna och hjulen från sitstiltens, de sitter monterade med två skruvar på vänster resp. höger sida av sitstiltens. Se bild. 7.
9. Demontera de två skruvar som håller sitstiltens axel. Se bild 8.
10. Dela på sitslyften. Se bild 9.

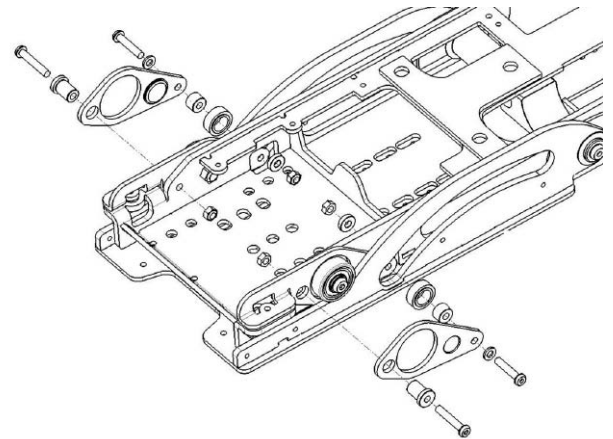


Bild 7. Demontera hylsorna och hjulen från sitstiltens.

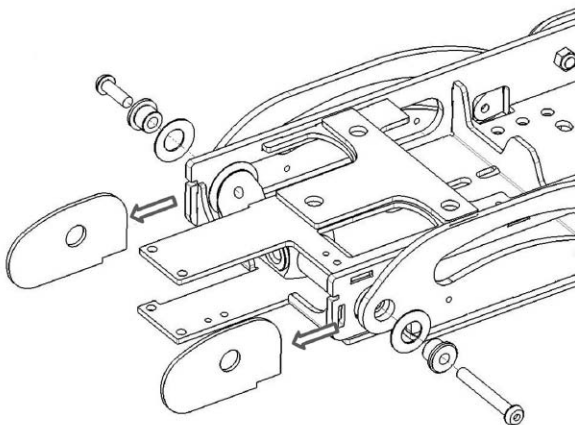


Fig. 8. Remove the two screws holding the seat tilt shaft and associated parts.

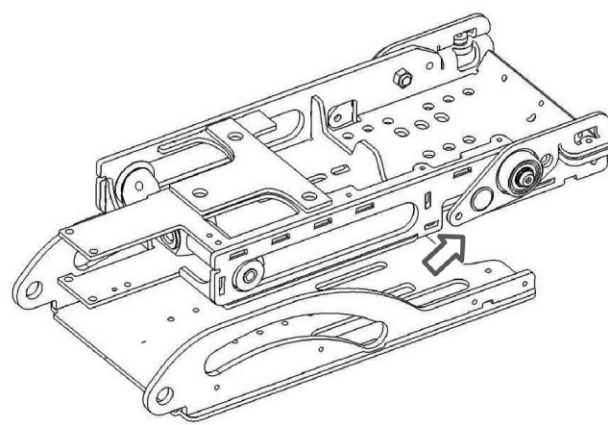


Bild 9. Dela på sitslyften.

Assembly Instruction

Document No. 260241	Revision A				permobil
Production state SERIES					
Preform Date 2014-02-13	Preform By TSN	Approved Date 2/14/2014	Approved By GHT	Page 4/9	

11. Demontera kullagret, hylsan och glidbrickan.
Se bild 9.

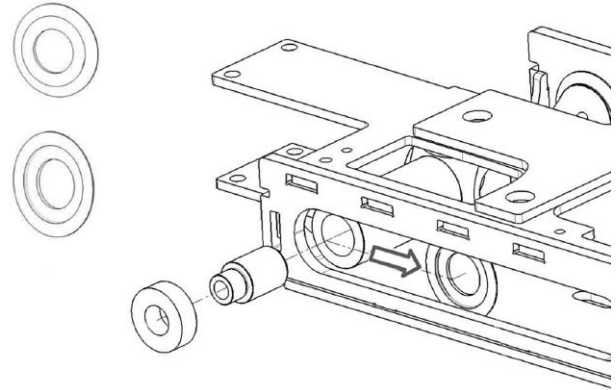


Bild 9. Demontera kullagret, hylsan och glidbrickan.

12. Demontera kullagret på motsatt sida. Se bild 10.

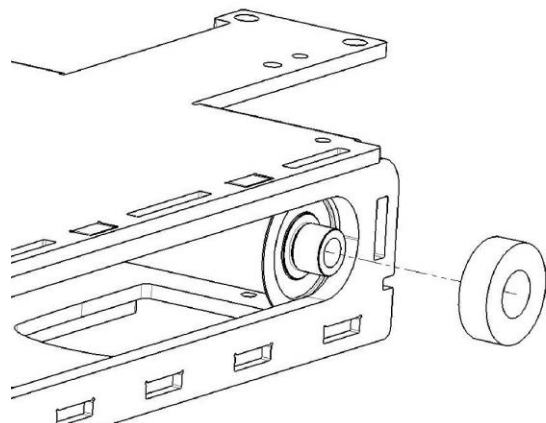


Bild 10. Demontera kullagret på motsatt sida.

13. Demontera sitstiltens axel. Se bild 11.

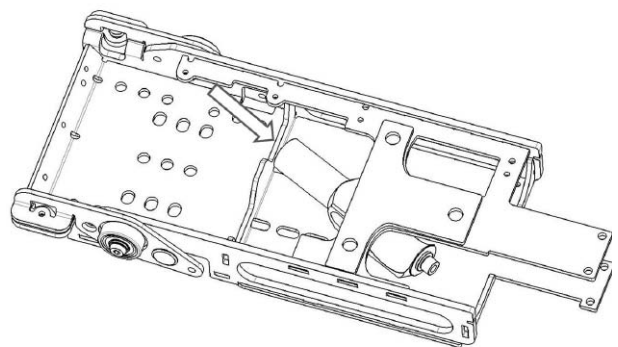


Bild 11. Demontera sitstiltens axel.

Assembly Instruction

Document No. 260241	Revision A				permobil
Production state SERIES					
Preform Date 2014-02-13	Preform By TSN	Approved Date 2/14/2014	Approved By GHT	Page 5/9	

14. Demontera glidpuckarna och plåtarna. Se bild 12.

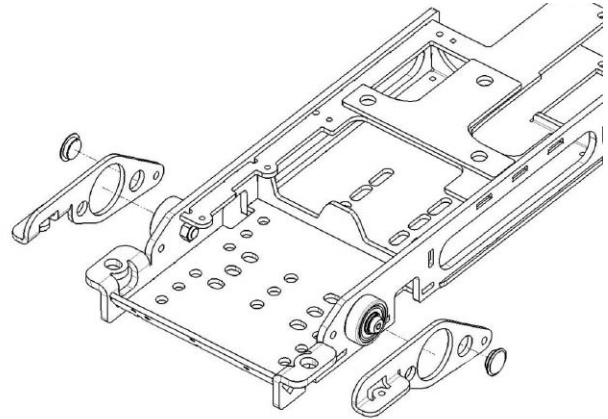


Bild 12. Demontera glidpuckarna och plåtarna.

15. Demontera kullagren, de sitter monterade med en skruv vardera. Se bild 13.

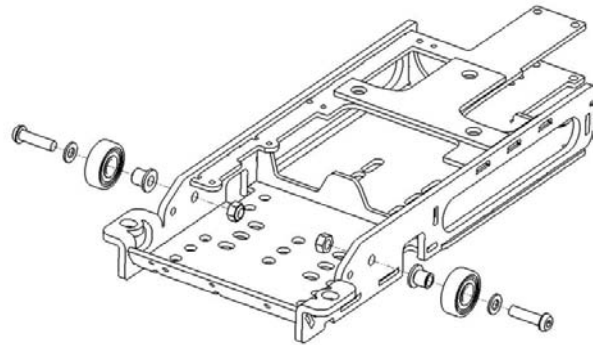


Bild 13. Demontera kullagren, de sitter monterade med en skruv vardera.

Assembly Instruction

Document No. 260241	Revision A				permobil
Production state SERIES					
Preform Date 2014-02-13	Preform By TSN	Approved Date 2/14/2014	Approved By GHT	Page 6/9	

Montering

Läs igenom anvisningen innan montering påbörjas.

1. Montera kullagren (11). Använd momentnyckel för att dra fast skruvarna. Se bild 14. **Åtragningsmoment 24 Nm.**
2. Smörj hålet i plåten med smörjfett innan glidpucken (5) monteras i plåtens hål. Detta håller delarna på plats. Se bild 15.
3. Smörj den platta sidan av glidpucken med smörjfett. Se bild 15.
4. Placera sitstiltaxeln inne i sitstiltlen.
5. Smörj glidbrickornas (2) kontaktytor med smörjfett.

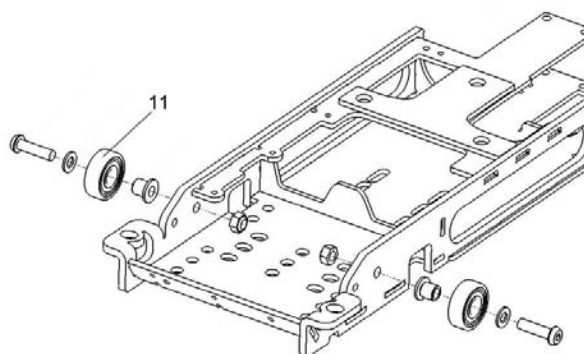


Bild 14. Montera kullagren.

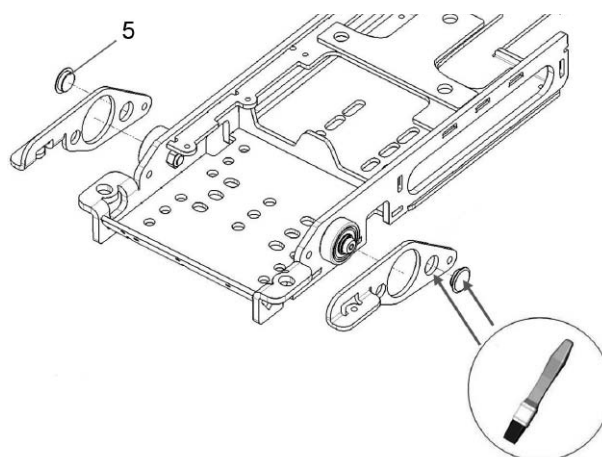


Bild 15. Smörj hålet i plåten med smörjfett innan glidpucken (5) monteras i plåtens hål.

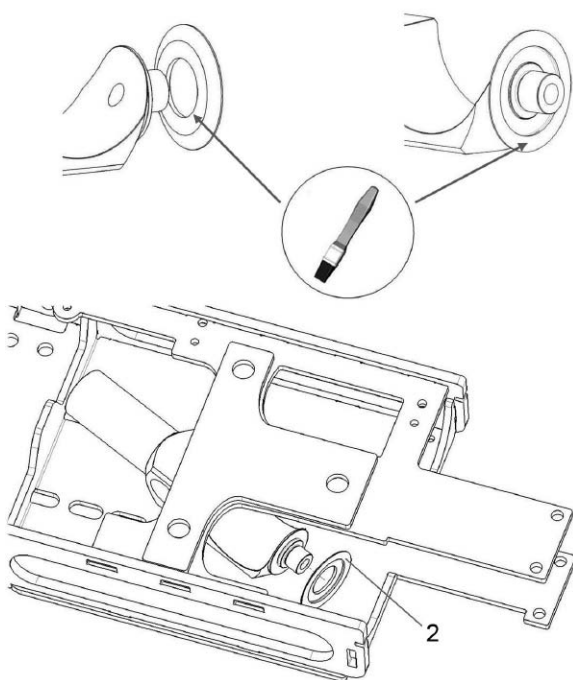


Bild 16. Smörj glidbrickornas (2) kontaktytor med smörjfett.

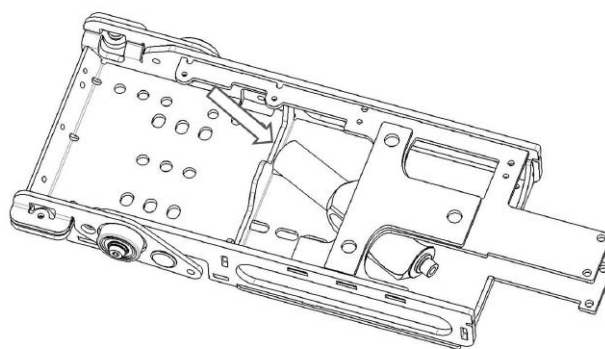


Bild 17. Placera sitstiltaxeln inne i sitstiltlen.

Assembly Instruction

Document No. 260241	Revision A				permobil
Production state SERIES					
Preform Date 2014-02-13	Preform By TSN	Approved Date 2/14/2014	Approved By GHT	Page 7/9	

6. Smörj kullagrets (3) hål med smörjfett innan montering. Se bild 18.
7. Smörj glidbrickornas (2) kontaktytor med smörjfett. Se bild 19.
8. Smörj kullagrets (3) hål med smörjfett innan montering. Se bild 19.
9. Lägg ihop de två delarna av sitstiltens. Se bild 20.
10. Montera ihop de två delarna med hjälp av skruvarna, bussningarna (4), skivfjädrarna (14) och klämskydden. Smörj insidan av bussningarna med smörjfett och applicera gänglåsning (Loctite 243) på skruvarna innan montering. Använd momentnyckel för att dra fast skruvarna. Se bild 21. **Åtragningsmoment: 24 Nm.**

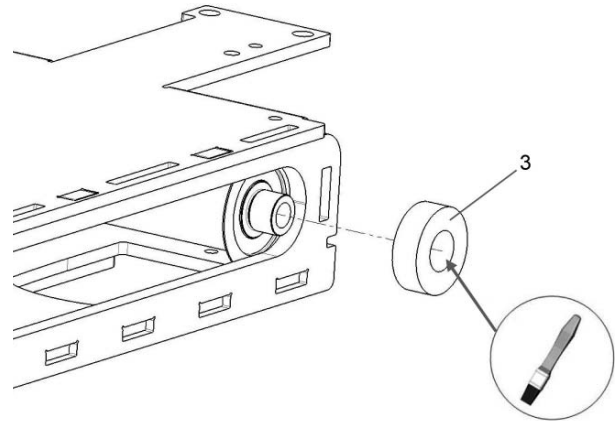


Bild 18. Montering av kullager.

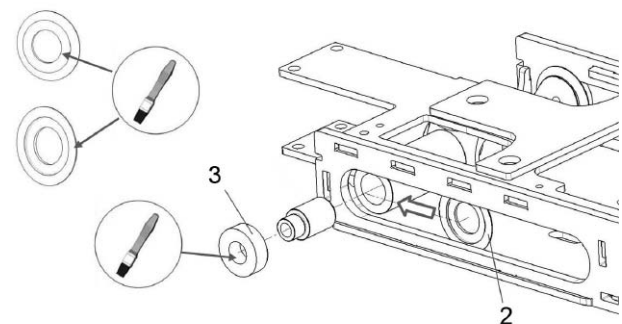


Bild 19. Smörj glidbrickornas (2) kontaktytor och kullagrets (3) hål med smörjfett.

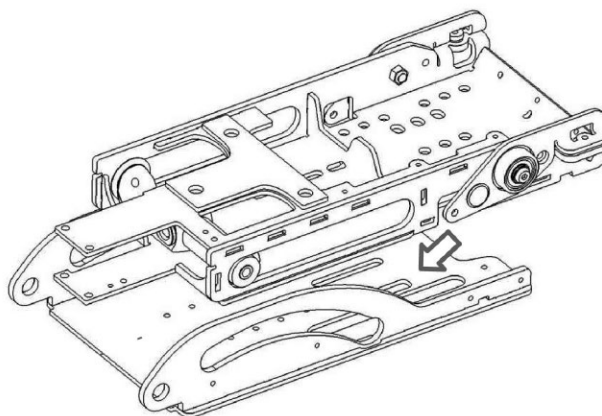


Bild 20. Lägg ihop sitstiltens två delar.

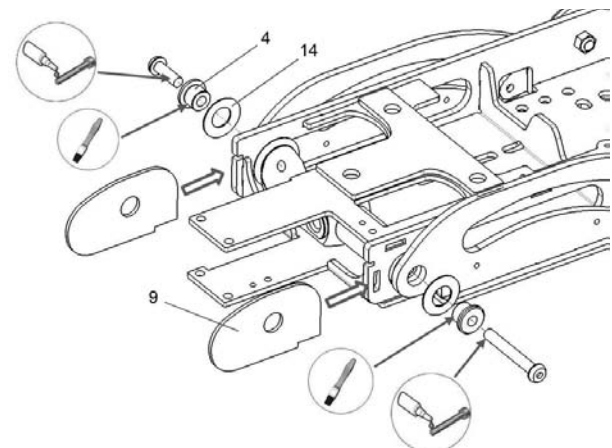


Bild 21. Montera ihop sitstiltens två delar.

Assembly Instruction

Document No. 260241	Revision A				permobil
Production state SERIES					
Preform Date 2014-02-13	Preform By TSN	Approved Date 2/14/2014	Approved By GHT	Page 8/9	

11. Smörj med smörjfett i plåtens hål samt mellan glidpucken och shimsbrickan, detta håller delarna på plats. Smörj sedan också glidpucklens plana yta. Se bild 22.
12. Smörj hjulen och hylsorna med smörjfett innan montering. Montera hjulen (10), hylsorna (1) och plåtarna med tillhörande skruvar och muttrar. Se bild 24.
13. Montera skruvarna, fjäderbrickorna och muttrarna på höger och vänster sida. See fig. 26.

OBS! Säkerställ att montera fjäderbrickorna åt rätt håll. Se bild 23.

OBS! Mät avståndet mellan plåten och översta brickan för att få rätt spänning. (Avståndet ska vara 6,3 mm.) Se bild 25.

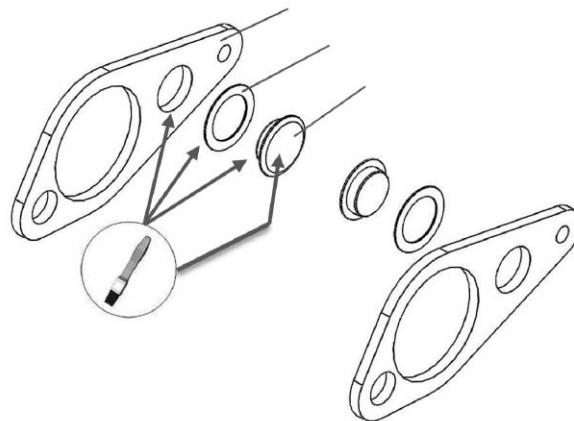


Bild 22. Smörj med smörjfett i plåtens hål samt mellan glidpucken och shimsbrickan.

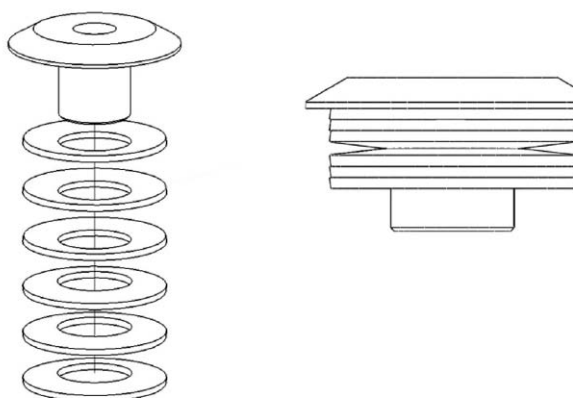


Bild 23. Fjäderbrickorna måste monteras åt rätt håll.

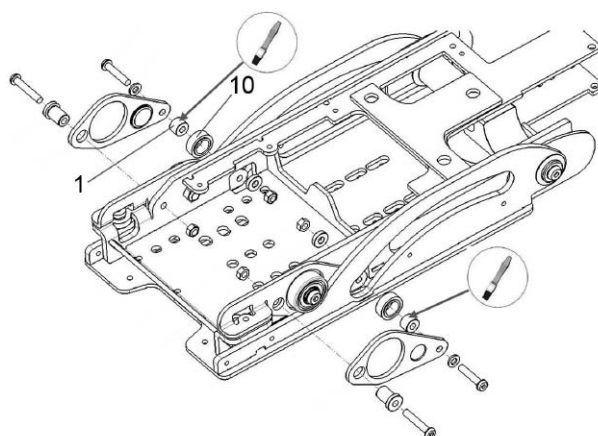


Bild 24. Smörj hjulen och hylsorna med smörjfett innan montering.

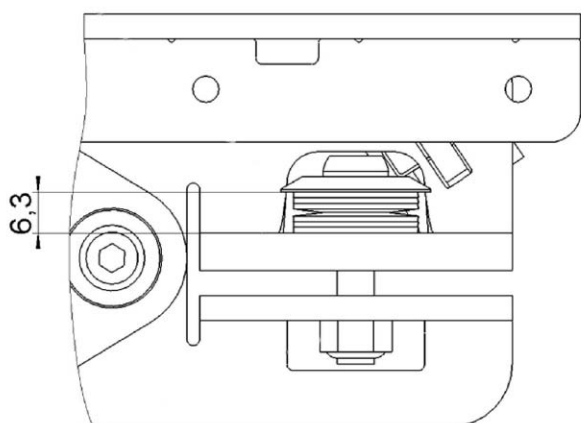


Bild 25. Mät avståndet mellan plåten och översta brickan för att få rätt spänning.

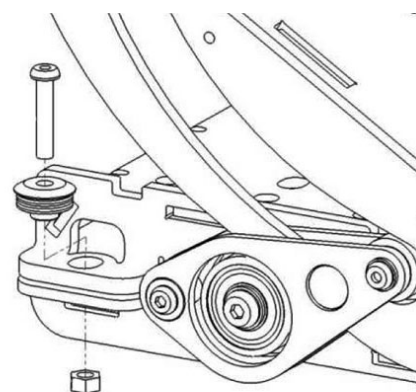


Bild 26. Montera skruvarna, fjäderbrickorna och muttrarna på höger och vänster sida.

Assembly Instruction

Document No. 260241	Revision A				permobil
Production state SERIES					
Preform Date 2014-02-13	Preform By TSN	Approved Date 2/14/2014	Approved By GHT	Page 9/9	

14. Smörj ställdonets trapetsgंगा med smörjfett och skruva in ställdonet i sitstiltens axel ca. 5 varv. Anslut försiktigt ställdonet till 24 volts strömkälla och kör försiktigt ställdonet inåt till dess att ställdonets bakre ände ligger ca. 17-18 mm. innanför plåtarnas bakre kant. Se bild 24.

OBS! Se till att hålla ställdonet rakt så att det går fritt mellan plåtarna.

OBS! Kör inte ställdonet för långt, ställdonets elektronik kommer kollidera med plåtarna och kan då skadas.

15. Montera ställdonets brickor (6) och dämpare (7). Se bild 27.

16. Montera de fyra skruvarna som håller ställdonets bakre ände. Se bild 28.

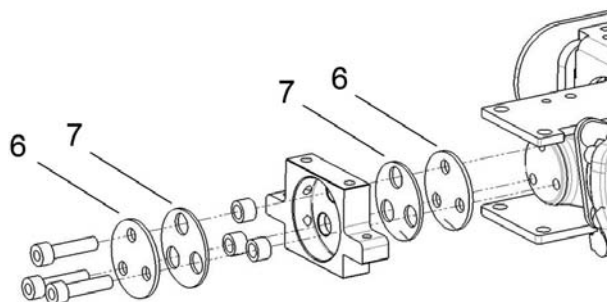


Bild 27. Montera ställdonets brickor (6) och dämpare (7).

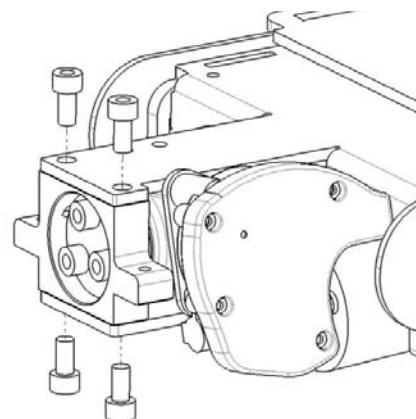


Bild 28. Montera de fyra skruvarna som håller ställdonets bakre ände.

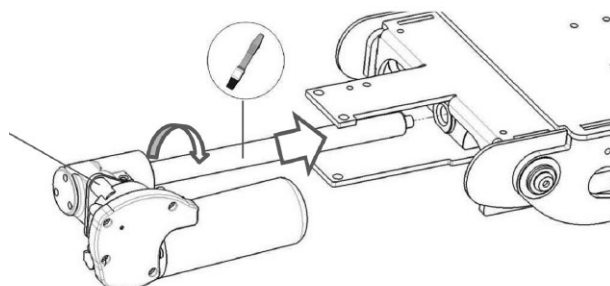
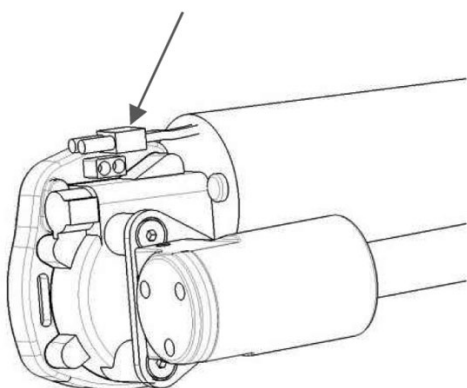


Fig. 29. Anslut försiktigt ställdonet till 24 volts strömkälla och kör försiktigt ställdonet inåt till dess att ställdonets bakre ände ligger ca. 17-18 mm. innanför plåtarnas bakre kant.